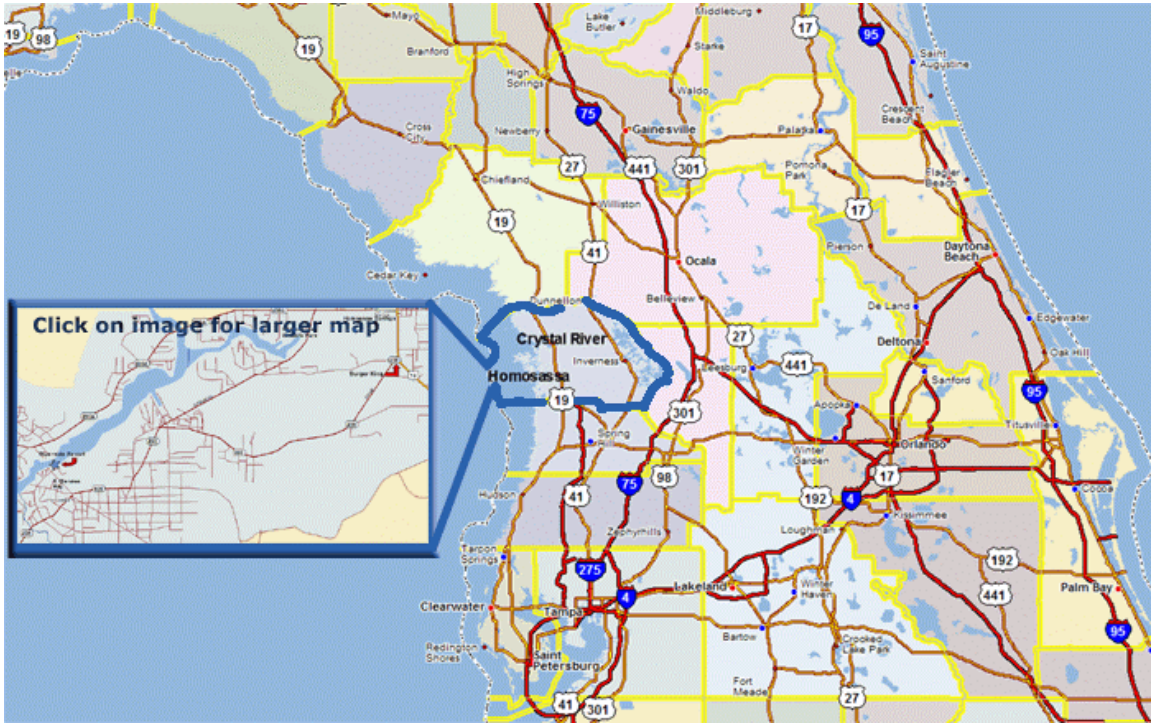


## The Miss Homosassa Tour, Directions to Riverside Resorts.



Please note, clicking on image will not work in pdf format

### **From the North (Ocala, Gainesville, Jacksonville)**

**From OCALA:** (About 1 1/2 hours) Take Hwy 200 to Hwy 491. Turn right. Go about 20 miles to Grover Cleveland Blvd. Turn right. Go to U.S. 19. Turn left. Go one light to Burger King. Turn right onto W. Yulee Dr. Go 2 miles to stop sign and turn left. Follow Yulee Drive past the Elementary School. The road will curve to the right as it passes the school. At the 4-way stop, turn right into the resort. We are approximately 3 miles from US 19.

**From GAINESVILLE:** (About 1 1/2 hours) Take the 121 West off of I-75. Go through Williston. When you get to Williston watch the signs to stay on 121. (There are about 4 turns to stay on 121). Take the 121 to the end at U.S. 19. Turn left. Go 20 miles to the Burger King in Homosassa (Not Crystal River). Turn right at the Burger King onto W. Yulee Dr. Go 2 miles to stop sign and turn left. Follow Yulee Drive past the Elementary School. The road will curve to the right as it passes the school. At the 4-way stop, turn right into the resort. We are approximately 3 miles from US 19.

### **From I-75 (North of Wildwood)**

Take Exit 66, which is S.R. 44 going west to Inverness. Now follow directions to Homosassa Riverside Resort from Wildwood (below).

## **From Miami and Orlando**

**From MIAMI:** (About 6 hours) Take the Florida Turnpike at S.R. 441 (Interchange #254). Go north on turnpike about 50 miles to last toll both. As you continue north the Turnpike will join I-75. Take Exit 66 going west on S.R. 44. Now follow directions to Homosassa Riverside Resort from Wildwood (below).

### **From ORLANDO International Airport**

Take Hwy. 528 (Beachline Expressway) west to the Florida Turnpike at S.R. 441 (Interchange #254). Go north on turnpike about 50 miles to last toll both. As you continue north the Turnpike will join I-75. Take Exit 66 going west on S.R. 44. Now follow directions to Homosassa Riverside Resort from Wildwood (below).

### **Directions from S.R. 44 (Wildwood Exit) to Homosassa Riverside Resort**

On S.R. 44 travel west through Inverness (going toward Crystal River) until you reach S.R. 490 (Homosassa Trail). Turn left and continue on S.R. 490 until you reach US 19 (Suncoast Blvd.). There is a traffic signal at this intersection in Homosassa Springs. Turn left at the signal (heading south) and go one short block to Halls River Road. There is a Hardee's Restaurant at this intersection. Turn right (west) and travel on Halls River Road to the first road on the left, which is Fishbowl Drive. Turn left on Fish Bowl Drive.

Continue past the entrance of the Wildlife Park, crossing over a small bridge. Continue on this road, the name will change to Yulee Drive. Follow Yulee Drive past the Elementary School. The road will curve to the right as it passes the school. At the 4-way stop, turn right into the resort. We are approximately 3 miles from US 19.

## **From the Tampa Bay area**

### **From TAMPA International Airport**

Leaving Tampa International Airport follow Veterans Expressway North Veterans Expressway will become the Suncoast Parkway Stay on the Suncoast Parkway North until it ends at Hwy 98 (approx 45 miles)

Turn LEFT onto Hwy 98, take Hwy 98 until it ends at US 19 (approx 6 miles)

Turn RIGHT onto US 19 continue until you reach Homosassa Springs, FL.(approx 6 Miles)

Turn LEFT at the first traffic light ( Burger King on the left @ W.Yulle Dr.)

Follow Double yellow lines to the first stop sign

Turn LEFT (still remaining on Yulle Dr.)

Follow the Double Yellow lines to the first 4-way stop sign.

Turn RIGHT and you will be at the Homosassa Riverside Resort

### **From St. Petersburg, Clearwater**

(About 2 hours to 2 hours 15 minutes) Take U.S 19 North. When you get to Weeki Watchee (Hwy 50) don't turn but keep going north on Hwy 19 exactly 20 miles to Homosassa. At the first light in Homosassa Springs you will see Burger

King on the left. Turn left here. This is S.R. 490 also called Yulee Drive heading west. Continue on this winding road about 2 miles and you will come to a stop sign. Turn left here and continue past the Elementary School as the road curves on the right. At the 4 way stop, turn right into the resort. We are approximately 3 miles from US 19.

**From Brooksville (S.R. 50)**

Follow S.R. 50 through downtown Brooksville. After you cross the railroad tracks on the west side of Brooksville you will come to a second light. At this light you must turn right to follow US 98 north. If you continue west on S.R. 50 it will take you 30 minutes out of your way. Both S.R. 50 west and US 98 going north will run into US 19. Turn right on US 19 heading north to Homosassa Springs. At the first light in Homosassa Springs you will see Burger King on the left. Turn left here. This is S.R. 490 also called Yulee Drive heading west. Continue on this winding road about 2 miles and you will come to a stop sign. Turn left here and continue past the Elementary School as the road curves on the right. At the 4 way stop, turn right into the resort. We are approximately 3 miles from US 19.

Only ninety minutes North of Tampa Bay via US 19, US 41, or I-75, ninety minutes west of Orlando, and sixty minutes south of Cedar Key.

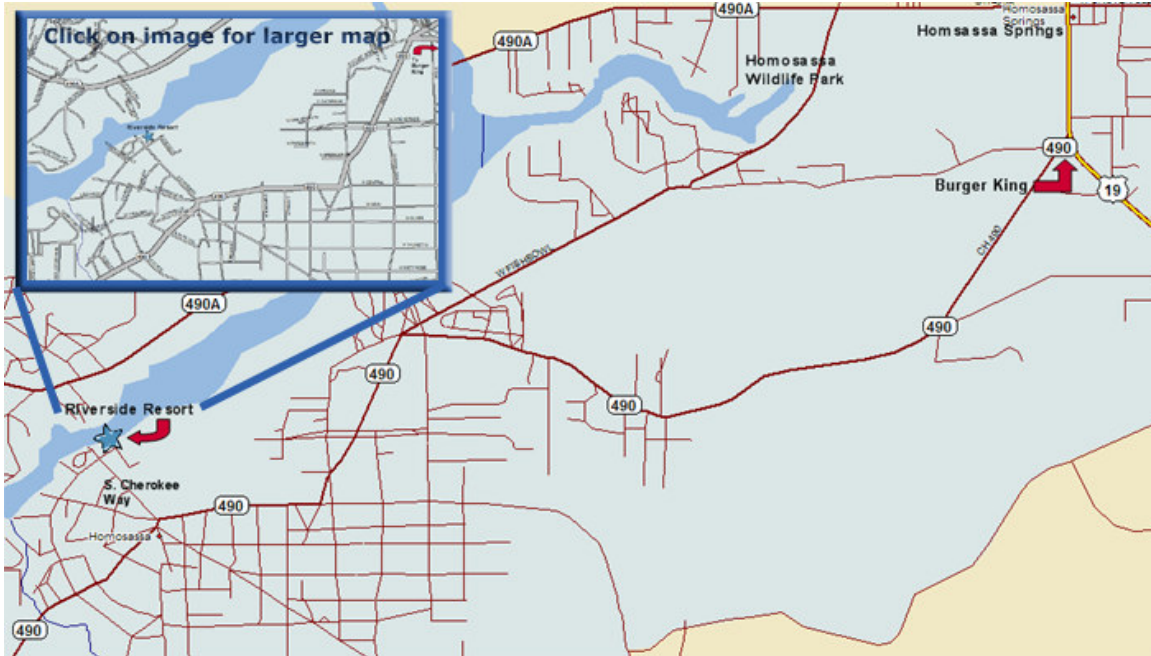
Homosassa provides you with one of the most convenient Florida locations. Disney World, Busch Gardens, Silver Springs and Weeki Wachee are all within your reach.

We are located 65 miles north of Tampa on the West Coast.

We are also 65 miles west of Orlando, only 60 minutes to Walt Disney World, Universal Studios, Epcot Center and Sea World.

A lot of folks come to our area and stay overnight rather than drive long distances. For nearest lodging I recommend the Riverside Resort (On the Homosassa River), in Old Homosassa. Rates range from \$55 and up with onsite restaurant and pool. Call 352-628-2474 for availability.

If you do get lost call me at 1-352-628-3450. We understand it is not easy to find us and often we have others waiting to depart on our tour.



After turning WEST on Hwy 490 (W Yulee Dr), continue to the stop sign at W. Fishbowl and turn LEFT. At S. Cherokee veer to the RIGHT and continue to the stop sign. Turn RIGHT and continue to the Riverside Resort Parking Area.

